

# PROFICY SCHEDULER / ROB-EX



Improve your production with better planning & enhance your competitive market position with Proficy Scheduler / ROB-EX

Proficy Scheduler / ROB-EX is a powerful production scheduling tool that offers several key values immediately after the activation, which typically only takes 4-6 weeks. The values are not only for the production planners but also for leaders and C-suite executives and in fact the whole company. Proficy Scheduler / ROB-EX can be used as a complete standalone planning solution or integrated easily with ERP and MES systems.

Production scheduling is a highly specialized area, controlling all the company’s operative assets, such as machines, materials and manpower. It is a complex area that requires a specifically dedicated tool that is both comprehensively tailored to handle both existing and future events and situations, and that is equipped with all relevant features for this function. By leveraging Proficy Scheduler / ROB-EX, leaders and executives can enhance their company's strategic planning, operational execution, and overall competitiveness, all while improving profitability and customer satisfaction.

“We have improved productivity and efficiency with Proficy Scheduler / ROB-EX. My co-planner and I both did a lot of overtime earlier, but Proficy Scheduler / ROB-EX has taken the pressure off the boiler. Our overview is much better, and we don’t do double work anymore. It is nice to be able to give a detailed reply when someone asks. We can do that now because Proficy Scheduler / ROB-EX gives us the ability to easily simulate what will happen when our plans are changed.

-Tommy Erhardt Petersen,  
Production Manager, GOSH COPENHAGEN.

## OUTCOMES

- 100% experience reduced labor costs on planning
- 71% experience reduced penalty costs
- 91% experience increased revenue
- 62% experience lower subcontractor costs
- 87% experience lower capacity costs
- 30% experience lower material costs
- 81% experience lower financing costs
- 26% experience lower energy costs

## 01 Better accommodate variations to improve production performance

Proficy Scheduler / ROB-EX acknowledges that everything in the production varies (and the fact that the world can change in a split second), and this software is specifically designed for handling variations in daily operations. It is designed to deal with variations, be agile and flexible, because we know that even for the best laid plans, things still happen that are beyond our control.

## 02 Real-time visibility drives company toward desired outcomes, ensuring alignment with corporate strategies

Proficy Scheduler / ROB-EX allows you to track & monitor production in real-time. This visibility enables quick adjustments to the production schedule when issues arise, ensuring that production stays on track. It gives you a unique view of the production, orders, capacity, resources, bottlenecks, manpower, machines, etc.

Proficy Scheduler / ROB-EX’ transparency helps in monitoring progress against company goals and enables them to steer the company toward desired outcomes, ensuring alignment with corporate strategies.

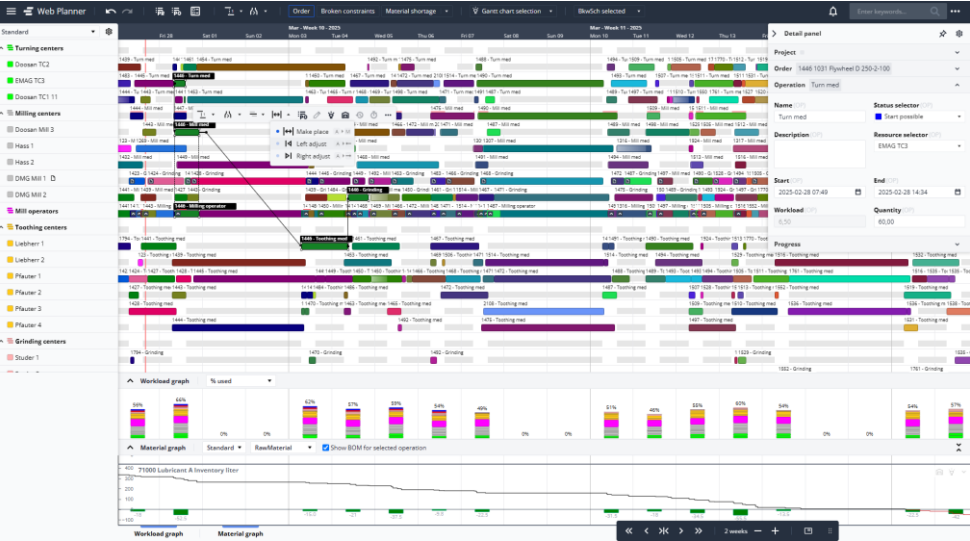
## 03 Improved efficiency, reduced lead time and better customer service

Proficy Scheduler / ROB-EX helps improve production schedules by considering various factors such as resource availability, production constraints, and deadlines. This leads to better utilization of resources and reduced downtime. By optimizing schedules, minimizing waste, and improving resource utilization, Proficy Scheduler / ROB-EX helps reduce production costs. It also helps to avoid expensive last-minute changes or overtime work. With better scheduling and resource allocation, businesses can reduce lead times, ensuring quicker turnaround on customer orders and improving overall customer satisfaction.

## 04 Integration with existing systems and improved cross-departmental collaboration

Proficy Scheduler / ROB-EX can be integrated easily with popular ERP and MES systems enabling seamless data flow and coordination across departments, which enhances overall operational efficiency.

C-suite leaders can leverage this cross-functional visibility to enhance coordination between production, sales, finance, and supply chain teams, leading to smoother workflows and better decision-making across the company.



“From the moment we went live with Proficy Scheduler / ROB-EX, my planner and I saved 2-4 hours a day combined on planning. Now we can predict so many things much earlier, and see further into the future regarding when we can produce. This means we can now give customers delivery updates earlier than before and notify them in good time if material isn’t in stock, which means the delivery has to be postponed. These values can be seen on the bottom line. The activation process was just great. The intense process meant that we learned everything quickly and could apply things immediately. In the end, it was beneficial that we worked so intensively on it, and I would prefer this approach on a larger scale because it made it much easier to stay on track and keep everyone engaged.”  
- Anne Kathrine Pedersen, Factory Manager, AVK Plast.

Improve your production with better planning & enhance your competitive market position with Proficy Scheduler / ROB-EX

### Proficy Scheduler / ROB-EX Web Planner

Need to plan on the go or on production floor? Proficy Scheduler / ROB-EX provides web-based scheduling and mobile dashboards making it even easier for you to monitor or reschedule your plan on the go. You can also see the here-and-now impact of changes, also when you are physically located in the production.

We are constantly developing the Web Planner to ensure that you keep getting value and our focus in the newest version of Proficy Scheduler / ROB-EX has been on the Web Planner:

- The project Gantt chart includes new and faster options to expand and collapse the project hierarchy.
- During planning in the Gantt chart, new adjustment options make it quick to align an operation with the end of the previous operation or the start of the next one. It is now also easy to shift overlapping operations, allowing you to quickly fit an urgent order into an existing plan.
- Web Planner now includes material graphs, enabling you to quickly and directly view the inventory for a selected operation in the Gantt chart, ensuring all materials are in stock when an operation is planned to start.
- It is now possible to view attached documents, so electronic documentation follows the task and is easily accessible with just a few clicks.

“The Web Planner is giving us a lot of value. Strategically, we've made the decision to fully commit to using it.

From a user perspective, it's more user-friendly. The Web Planner is of course different from the client version, but overall, I consider myself a very visual person—and it's just so much better to look at than the client.

Things like managing calendars and so on is so much easier now than it was in the client and a lot more intuitive. The fact that you can customize the Web Planner to show exactly what you want has been a real benefit. Employee satisfaction is very good, and overall, they've adapted to it very well.”

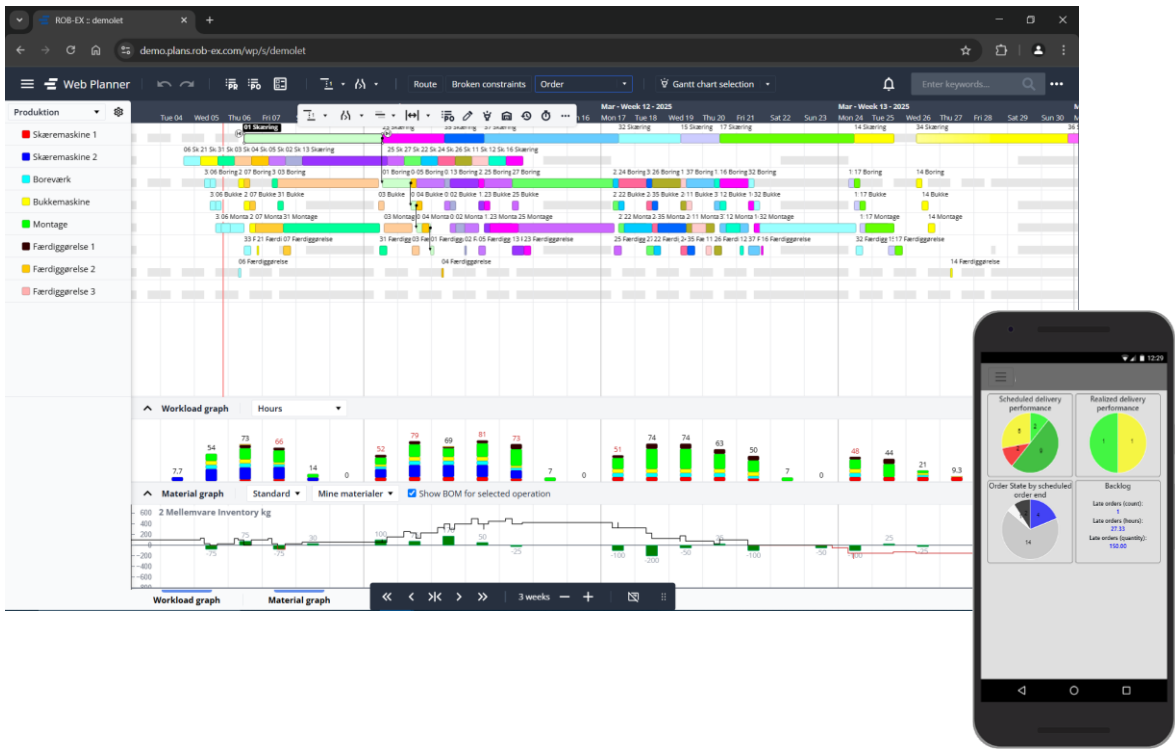
- Bjarne Lausen, Design & Construction, AAG.

For sure, the Web Planner is the client for the future and where the development resources are spent.

Compared to the desktop client, we have redesigned all Web Planner features to get the job done with fewer clicks. It is easy to access for the user and easy to install and update.

And let's not forget the fact that this web browser experience is the preferred user interface by younger generations.

- Jens Bjerregaard, Senior Scheduler Product Manager, GE Vernova.



For detailed Hardware and Software Requirements, please consult the product documentation.

### NOTE:

In December 2024, GE Vernova completed the acquisition of ROB-EX A/S. The ROB-EX product has been offered as a part of GE Vernova’s Proficy portfolio for the past 15 years and is now fully integrated in the Proficy® family from GE Vernova.

ROB-EX SCHEDULER IS NOW PROFICY® SCHEDULER / ROB-EX.

Proficy Scheduler / ROB-EX helps manufacturing companies execute their scheduling plans with confidence, ease and full visibility of the impact of their decisions.

LEARN MORE