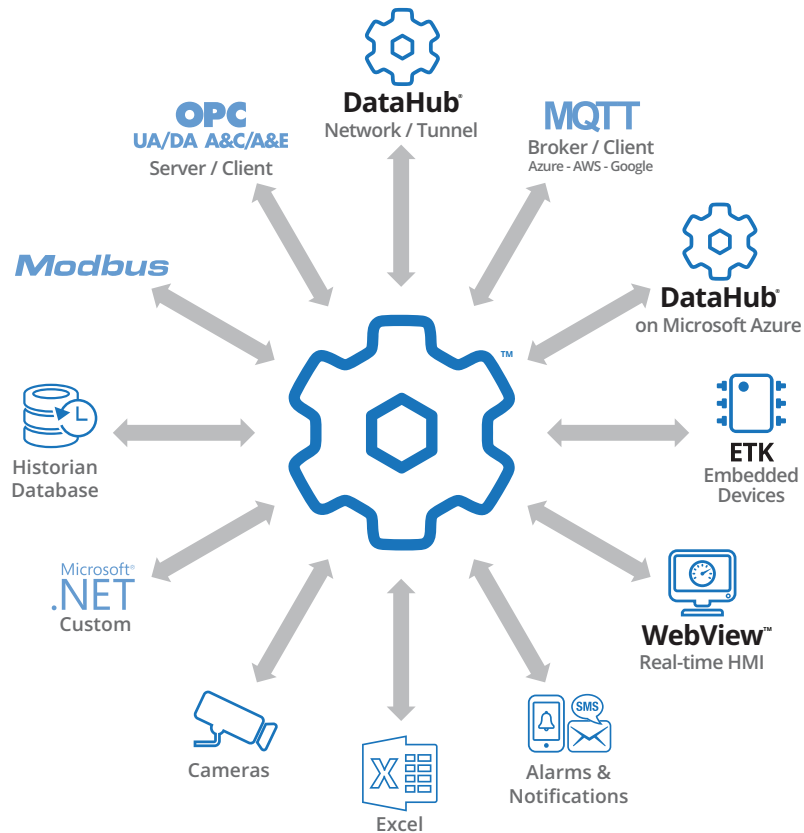




DataHub®

Secure Industrial IoT Redefined™



Get the most from your industrial data

DataHub® software integrates data from a number of data sources and provides the only secure way to move industrial data from OT to IT without requiring any inbound firewall ports or VPNs. DataHub is unmatched for versatility, power, speed, security, and ease of use.

Connect to multiple data sources

Make real-time, bidirectional connections to OPC UA, UA A&C, and Classic (DA, A&E) clients and servers. Connect any SQL database, AVEVA Historian/Insight, OSIsoft PI, InfluxDB, Modbus slave, Excel spreadsheet, custom programs, Azure IoT Hub, Amazon IoT Core, AVEVA Insight, MQTT Sparkplug B, any standard MQTT client or broker, and embedded systems.

Integrate all data into a unified namespace

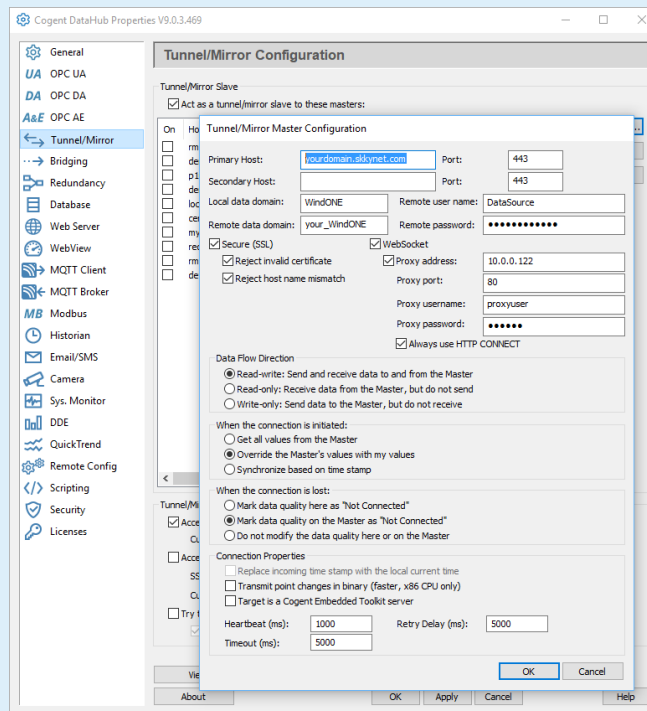
Bring data from all sources and any protocol into a single, unified namespace. Any selected subset of this aggregated data can be accessed by clients using a supported protocol: OPC UA, OPC Classic, MQTT, Sparkplug B, Modbus, DDE, TCP, ODBC, HTTP, XML, and more.

Use your data in any number of ways

- Network OPC servers and clients
- Monitor and do supervisory control
- Log your data to any SQL database
- Generate alarms and notifications
- Securely connect to any IIoT platform
- Trigger actions based on data changes
- Run real-time analysis in Excel

Why choose the DataHub?

- Convenient – all features are fully integrated into a single user interface
- Fits in with just about any industrial SCADA system
- Saves time and money through easy configuration and robust performance
- Worldwide user base of over 2,000 customers with over 26,000 installations
- Fast – handles 50,000+ data point changes per second
- Simple licensing model streamlines system management and deployment
- Connects to Skkynet DataHub in Microsoft Azure, best-of-breed networking for the Industrial IoT, allowing any combination of in-plant, cloud or hybrid connectivity configuration per dataset



System information

DataHub® middleware supports OPC UA (server and client), OPC UA A&C (server and client), OPC UA HDA (server), OPC Classic (DA 3, DA 2, and A&E), as well as Modbus TCP, MQTT, MQTT Sparkplug B, ODBC, DDE, TCP, HTTP and more. It runs on the following operating systems:

- Windows Server 2022 / 2019 / 2016
- Windows Server 2012 & R2
- Windows Server 2008 & R2
- Windows Server 2003 & R2 (DataHub v8 only)
- Windows 11 / 10 / 8.1 / 7
- Windows XP SP2 (DataHub v8 only)

About Skkynet

Skkynet is a global leader in real-time industrial solutions that allow companies to securely acquire, monitor, control, visualize, network and consolidate live process data in-plant or in the cloud. DataHub®, Skkynet DataHub in Azure, and Embedded Toolkit (ETK) software enable secure, real-time data connectivity for industrial automation, Industrial IoT, and Industrie 4.0. Visit skkynet.com for more.

Skkynet®, DataHub®, WebView™, the Skkynet and DataHub logos are either registered trademarks or trademarks used under license by the Skkynet group of companies (“Skkynet”). All other trademarks, service marks, trade names, product names and logos are the property of their respective owners.