

WEB HMI from GE Digital

Driving decision support for operators with high-performance visualization

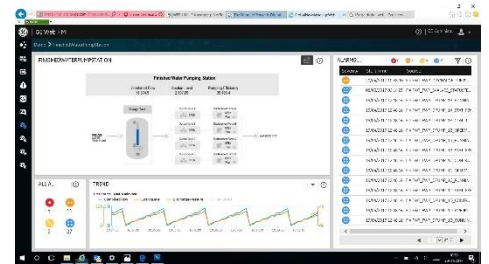
Fourth-generation HMI/SCADA increases efficiency and reduces costs

With just a glance, operators should be able to recognize which information requires their attention and what action needs to be taken.

They need to know quickly what problems have arisen and how they can be addressed efficiently.

You can enable smart operators with new fourth-generation HMI/SCADA.

The new **WEB HMI from GE Digital** leverages the latest technologies that help deliver faster time to insight and greater efficiency for your operations while speeding time to solution for system integrators. WEB HMI offers an intuitive user experience to reduce execution errors and improve operator response time to events and incidents. This new generation of software combines proven HMI/SCADA capabilities—used by thousands of organizations around the globe—with new advanced features to deliver best-in-class results.



01 Find information easily with a context-rich HMI based on the model structure

This context-rich HMI changes as the user moves through the system.

Navigation is derived from the model structure built by the engineer.

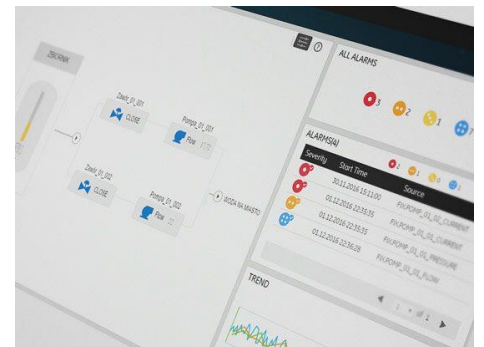
The context follows the asset definition and is defined only once for a class of assets.

This prescribed experience provides the operator with the most relevant information—in context—and minimizes the effort to find it.

02 Speed operator response with HMI layouts that facilitate situational awareness

Designed to the Efficient HMI guidelines, WEB HMI changes the HMI experience to enable decision support for the user.

The overall HMI layout is designed to provide the operators with the most informed view of the problem or task at hand. Each window of the layout provides a different, interchangeable perspective, or view, on the displayed asset to deliver a personalized experience.



03 Reduce time to solution with Efficient HMI out of the box

To help engineers create the right user experience, iFIX 5.8 R2 contains pre-defined objects and templates designed using Efficient HMI concepts.

Effective layouts are also available out of the box.

Designing your HMI has never been so easy, speeding time to solution and maintenance.

Additionally, WEB HMI introduces a unique concept of flexible assembly of graphical content using external HTML5 editors.

04 Achieve visualization where you need it with native responsive web design

The HTML5 user interface produced using WEB HMI offers native Web out of the box and supports responsive design concepts.

The displays support multi-touch and can scale to adapt to various form factors and orientations where the HMI will be viewed, from small to large high resolution screens.

05 Save time with zero deployment clients with centralized management

WEB HMI is a true native web application. Web clients do not require any client side installation. The configuration, development, and deployment are all centralized, and any updates or changes are automatically reflected on the clients.

The clients can be initiated through a browser or kiosk session and always start with the latest software updates deployed on the server.

