



# Proficiency Operations Hub 2023 from GE Digital

Modern, centralized OT visualization with no-code configuration, native HTML5 & remote access

## Enable collaboration & continuous improvement with OT business intelligence, centralized visualization/configuration & digitized processes

Looking to quickly analyze production data for an issue you saw? Need to extend Operations visibility to non-OT personnel? Tired of wasting money on siloed and fit-for-purpose interfaces?

Proficiency Operations Hub from GE Digital is a centralized environment to rapidly build industrial applications (data connectivity, aggregation and visualization), enabling improved plant operations through comprehensive, contextual information that's easier to analyze and act upon independently of location.

With Proficiency Operations Hub and HTML5 technology, teams across all levels in an organization can increase operational efficiency and make better decisions based on real-time and historical plant-wide application data, including historian, HMI/SCADA, MES, analytics, and third party. Users can monitor, control, provide data entry, and perform analysis all through Proficiency Operations Hub.

### Out-of-the-Box or Build-Your-Own Industrial Apps such as:

- Monitor & Control
- Dashboards & KPIs
- Analysis
- Reporting
- Digital Andon
- Sustainability Metrics

### Outcomes

- Improve collaboration and continuous improvement programs with a cross-business, easily accessible digital operations hub
- Rapid, no/low code development of Web-based displays for operations
- Faster response and better decision-making with centralized visualization, digitized processes, data analysis in context, and task lists
- Decreased costs and time-to-market for creating Web-based operations applications using HTML5 technology
- Lower maintenance costs with centralized Web applications
- Information anywhere, any time with responsive design

## 01 Accelerate development with code-free configuration and native HTML5

Proficiency Operations Hub allows both developers and non-developers to quickly assemble displays through a comprehensive library of widgets and arrange them to provide responsive operator visualization. You can easily define data sources and entities for connected devices and create queries to access and transform data into actionable information for operations. Drag-and-drop design allows for simple placement and configuration of visualization components on the display, then dragging the query or data source onto the component quickly enables the data connections.

## 02 Deliver contextual, actionable information with a cross-business digital operations hub

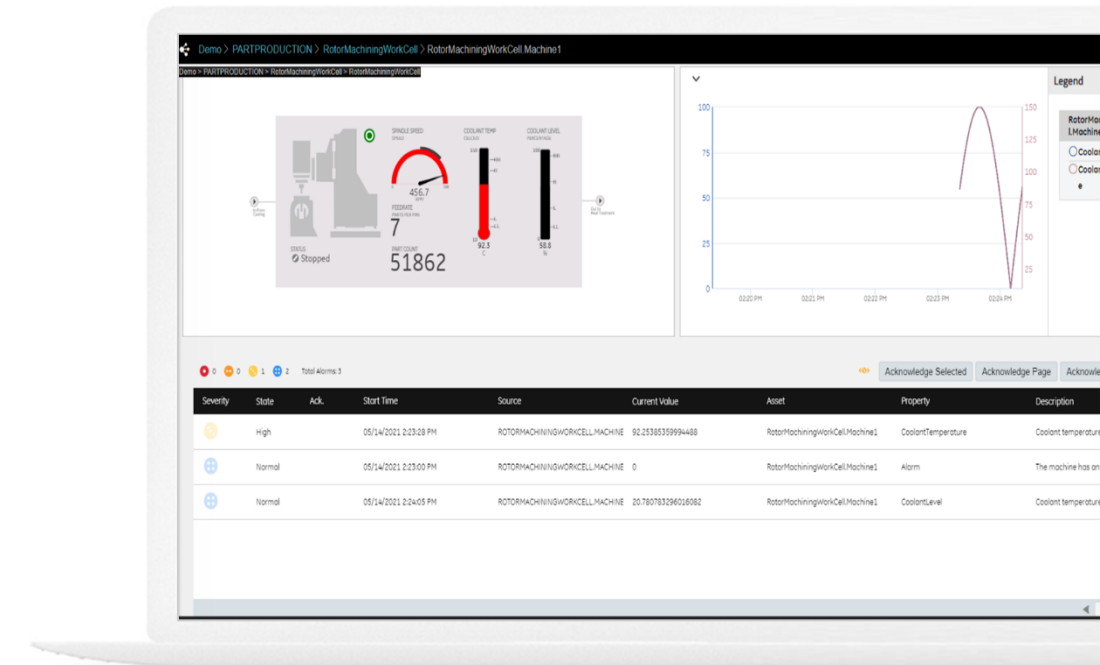
Proficiency Operations Hub shares information across frontline workers, empowering them with knowledge of what is happening. The software enhances accessibility across roles and locations, providing critical information including trends for improved response and real-time task lists. The solution also makes it easy to collect data from operators, facilitating interaction and sending commands back to connected interfaces. Operators can monitor, control, analyze, and more.

## 03 Information at your fingertips

Responsive design and native HTML5 technology allow you to build the application, so information is readily available on PC displays, tablets, and mobile phones, allowing access to information and insights into your operations from anywhere, any time.

## 04 Fast, automatic response based on IIoT data

Proficiency Operations Hub allows you to trigger automatic actions based on human events or device or system data. You can configure actions to drive data queries, send emails, or send commands to devices.



## 05 Save time with zero deployment clients, centralized management & standards

Leveraging Web technology and open standards such as OPC UA for interoperability, Proficiency Operations Hub reduces deployment and maintenance time. The true native Web clients do not require any client installation. Deploying and maintaining have never been easier.

With native HTML5, you can design once and deploy across different display technologies, reducing configuration and maintenance efforts, giving your enterprise teams rich Web-based OT intelligence.

*“Proficiency Operations Hub accelerated time to value as we developed and delivered an expanded remote and local monitoring and control solution for ENGIE, a major energy company serving millions of customers. We leveraged this highly flexible software including RAD capabilities in conjunction with the Proficiency portfolio to create reusable objects and High Performance HMI operator screens, GIS functionality, dashboards, and more.”*

**Sven Simons, Manager, Industrial IT Business Unit  
Control & Protection Automation nv**



# Proficiency Operations Hub 2023 from GE Digital

Modern, centralized OT visualization with no-code configuration, native HTML5 & remote access

## Features

### New in Version 2023

- SVG graphics editor: Draw custom graphics or bring your SVG and animate
- Out-of-the-Box (OOTB) graphics: Accelerate screen development with our selection of out-of-the-box graphics including gauges, pumps, tanks, valves, and more
- Canvas and Flex Layouts: Create screens that scale proportionally or design more sophisticated responsive behaviors
- New Designer experience: Perform most screen-building activities from Configuration Hub

### Rich Features, Continuous Innovation

- Consolidate disparate data and applications into a single interface tied to a singular model context
- Design role- and function-based interfaces with ability to deploy across all users in an enterprise
- Native HTML5 allows for designing once and deploying across different display technologies, reducing configuration and maintenance efforts

- Develop, manage, and deliver applications that collect, display, and analyze data from equipment or servers – without needing programming skills
- Cloud (Azure and AWS VM), on-prem or hybrid
- Monitor, control, data entry, analysis, and task management capabilities
- Democratized tool for cross-business access
- Proficiency family integration: iFIX, CIMPLICITY, Proficiency Historian, Proficiency Plant Applications, Proficiency WebSpace, Proficiency CSense, Proficiency Batch Execution, Proficiency Workflow
- Connectivity: OPC UA (including Write for third-party integration), relational databases (SQL), time series, Historian, REST, MQTT, URL
- Data Management: Modeling including Entities and Pivot Tables and Grid; Queries, events, and notifications
- Model and flat tag support
- Trigger automatic action based on IIoT events & data
- ISA 18.2 and ISA 101 for improved operator performance
- User-friendly WYSIWYG App Builder with a rich development library including extensive widgets and drag-and-drop configuration
- Native HMI builder integration - HMI widgets: Mimic, Alarm, Proficiency WebSpace (iFIX and CIMPLICITY)
- Stock widgets: Gauge, Timeline Chart, Indicator, Grid, Pareto Chart, Spider Chart, Sparkline, Bullet Graph, iFrame, and many more
- Trend Analysis App (widgets) to improve root cause detection and collaborative analysis by providing ad hoc trending & KPI dashboards from Historian data.. Feature-rich app for data analysis in model context
- Task Lists (widget) on an asset with context. View and act on tasks in real time with Proficiency Workflow integration
- Multi-timeline widget for displaying event-based data such as downtime, machine/equipment utilization and more
- Visualization widgets for supervisory dashboards to enhance OT Business Intelligence (BI)
- SDK for custom widgets and entities REST API
- Dataflow editor for creating runtime logic to transform data for visualization
- Responsive layouts per page (Web, mobile, tablet)
- Actions, Conditions, and Formulas
- Access using PC displays or mobile devices
- Native HTML5 and CSS3 for platform independence
- Role-based permissions at the page level
- Security: AD and shared UAA support
- QR code navigation for mobile
- Easy installation and configuration – Proficiency Installer and Configuration Hub
- Up to 1,000 Concurrent Clients on a single server
- Web-based technologies, cloud, and Docker: Deployment, product updates, accessibility/mobility, improved collaboration, and lower IT costs
- Excel Add-In for detailed queries by model, asset, type, and flat tag
- Languages: English, Japanese, Chinese, Korean, Spanish, German, Russian, Czech, Italian, French, Portuguese, Turkish

Proficiency Operations Hub provides new widgets to enhance visualization and speed response.



Please consult the online [product documentation](#) for hardware and software requirements.

Proficiency Operations Hub supports rapid application development and rich displays for faster operational response and better decision making.

LEARN MORE

# Proficiency Operations Hub 2023 from GE Digital



Modern, centralized OT visualization with no-code configuration, native HTML5 & remote access

## Services

In the world of Industrial Internet of Things (IIoT), organizations are able to optimize productivity, reduce costs, and achieve Operational Excellence. While this is an exciting time for opportunity and growth, it can also bring on new challenges, questions, and uncertainty. No matter where you are on your IIoT journey, GE Digital has the right services offering for you.

[Advisory Services](#) We can help you plan and start your IIoT journey in a way that aligns to your specific business outcomes.

[Managed Services](#) We can help you maintain your critical machines from one of our remote locations around the world using model-based predictive analytic technology.

[Implementation Services](#) Our experienced global Automation partners can implement a collaborative, multi-generational program that marries your existing investments to the right enhancements and technology.

[Education Services](#) We specialize in education services to ensure that you're leveraging our solutions to the fullest extent with our training and certificate programs.

[Acceleration Plans](#) Let us help by ensuring that your business continues to operate at its highest efficiency, all while mitigating risks to your investments.

[Security Services](#) Our solutions provide industrial-grade security for a wide range of OT network and application topologies.

## Related Products for Your Digital Transformation Journey

GE Digital's Proficiency suite helps you precisely monitor, control, and visualize every aspect of your operations, enabling operators to make the best decisions faster. Transforming your business requires foundational innovations that lay the groundwork for future success.



### [iFIX](#)

Gain visibility into your operations and secure agility for smarter decision making that drives results.



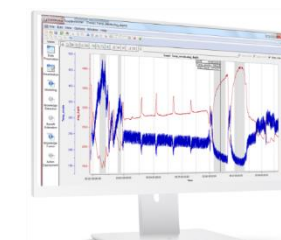
### [CIMPLICITY](#)

Drive real-time visibility for smart operators with true client-server based visualization and control.



### [Proficiency Historian](#)

Optimize asset and plant performance through time-series and A&E industrial data collection and aggregation. Improve decision-making with advanced trend analysis.



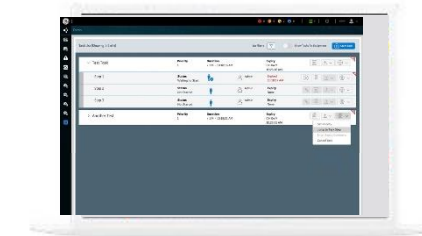
### [Proficiency CSense](#)

Turn raw data into real-time value with a digital Process Twin and proven industrial analytics software



### [Proficiency Plant Applications](#)

Maximize overall equipment effectiveness (OEE), improve production scheduling, and ensure product quality by leveraging real time production data



### [Proficiency Workflow](#)

Guide operators with dynamic, interactive electronic work instructions and eSOPs for more consistent operations and optimized processes.

#### About GE

GE (NYSE: GE) is the world's Digital Industrial Company, transforming industry with software-defined machines and solutions that are connected, responsive and predictive. GE is organized around a global exchange of knowledge, the "GE Store," through which each business shares and accesses the same technology, markets, structure and intellect. Each invention further fuels innovation and application across our industrial sectors. With people, services, technology and scale, GE delivers better outcomes for customers by speaking the language of industry.

©2023 General Electric. All rights reserved. \*Trademark of General Electric. All other brands or names are property of their respective holders. Specifications are subject to change without notice. 03 2023

#### Contact

[www.ge.com/digital](http://www.ge.com/digital)